

eosens TS3 Update Instructions

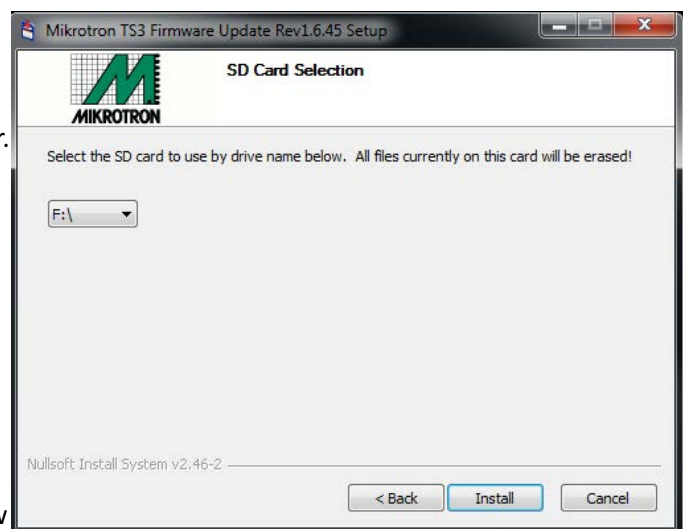
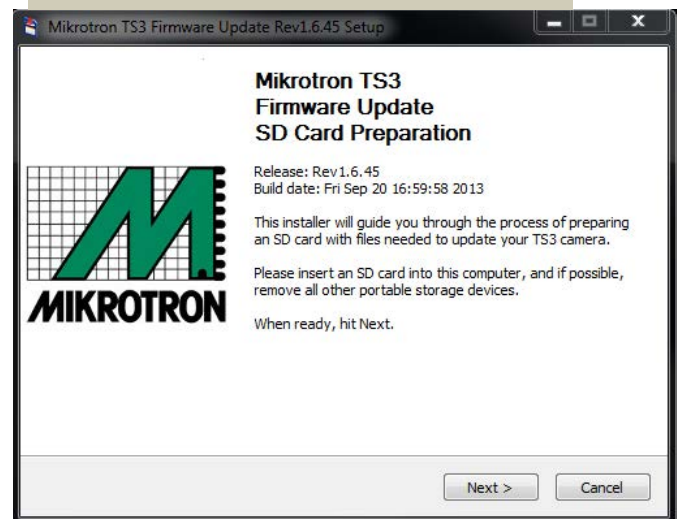
If you are notified by Mikrotron or one of its distributors that an update is available, they will let you know where the file is located and how to download it. The PC will need to have an SD Card port or have a card reader attached to it. (Note: It is possible to use the camera's SD Card port for this purpose by attaching to the PC via the OTG cable.)

Important!...Save all image data on the camera before updating. File metadata structures may change with updated firmware.

Update Procedure:

1. Navigate to System/Information/Status to see the current Software Version of your **eosens TS3**, or to the Find Camera dialog in FasMotion.
 2. Power down the camera.
 3. Download the update files to a Windows PC. The camera firmware update file name will be: "Mikrotron_Revx.x.x_<Year>_<date>.exe." For example, revision of the 1st of August, 2013 is: Mikrotron_rev1.6.34_2013_0801.exe and FasMotion_1.6.34.exe. Updates always include both camera firmware and FasMotion software. The version numbers should match. **Update the camera first!**
 4. Attach an SDHC card to the PC. If the PC does not have a built-in card reader, you may attach a USB card reader to it. **Please note the drive letter the PC assigns the card.**
 5. Double click on the update file. The Update Screen will appear. Click Next.
 6. A License Agreement will appear. Click the check box to accept the terms and click Next.
 7. A screen will appear for selecting the SD Card. Make sure that you have selected the correct drive letter before clicking on Install. A new window with a progress bar will appear.
 8. Once the update program has finished writing to the SD Card, a final screen will appear. Click on Finish. Eject, and then remove the SD Card from the PC.
- Note: If the update creation verification fails the first time, retry with the same SD Card.
9. Insert the SD Card into the SDHC slot of the camera.
 10. The update may be initiated from hardware or software. Select an method from the next page.
 11. Navigate again to System/Information/Status to see the new Software Version of your **eosens TS3**.
 12. Perform a Black Frame Calibration on the camera via the Record Menu on the **eosens TS3** or the Configuration Menu in FasMotion.
 13. If your camera has an SSD, it should be formatted before use.
 14. Restore the SD Card. (See "Restoring the SD Card" on the next page.)

eosens-A3	
TS3100S8128-M	
MAC Address:	a4:1b:c0:00:00:a3
Software Version:	1.6.45
FPGA Version:	0.1.186
Sensor Version:	L1300C-A2-0121
GigE Vision Version:	1.02
Bootloader Version:	Jul 13 2012 - 10:42:38
Battery SerialNo:	FT33000068



Update Methods

Update from FasMotion software:

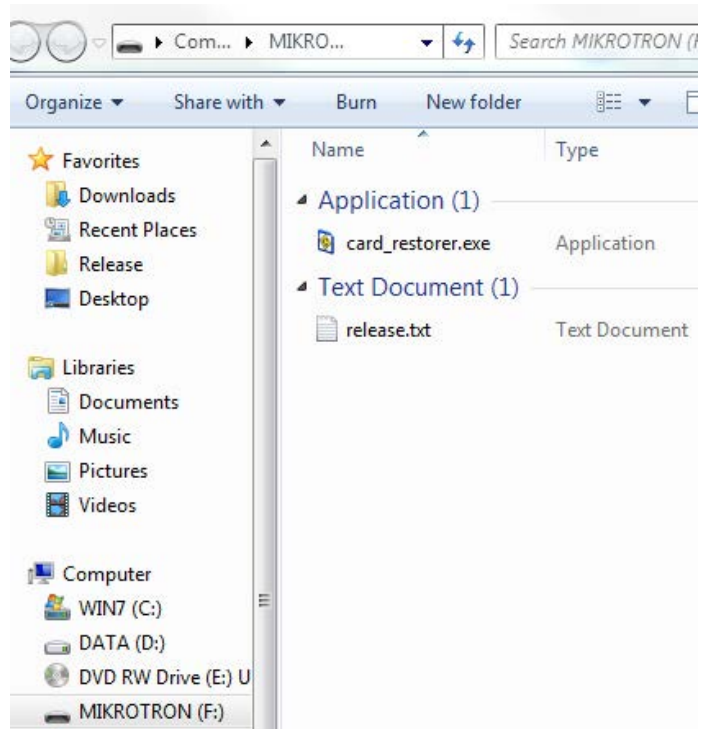
1. Follow #s 3-9 on the previous page.
2. In FasMotion, select "Update" in the Camera menu.
3. The camera should perform the update and reboot.
4. After the camera has rebooted, you will need to reconnect to FasMotion. (This is a good time to update FasMotion.)
5. Follow #s 11-14 on the previous page.

Update from the Camera GUI:

1. Follow #s 3-9 on the previous page.
2. Navigate to System/Configuration and select Update.
3. When prompted if you have an Update SD card inserted, click on "Yes."
4. The camera should perform the update and reboot.
5. Follow #s 11-14 on the previous page.

Update on Power Up:

1. Follow #s 3-9 on the previous page.
2. Power down the camera.
3. TSx: Power up the camera while pressing the Up Arrow on the D-Pad. As the eOSENS TS3 boots up, you will see a blue update screen and a progress bar.
4. The camera should perform the update and reboot.
5. Follow #s 11-14 on the previous page.



Restoring the SD Card

The SD card you have used for the camera update now contains the files and folders as shown. Refer to the TS3_Release_Notes file for information about the update.

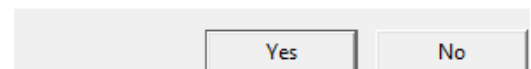
The format of the SD Card has been changed and now there is very little (35MB) accessible space left.

To Restore the SD Card:

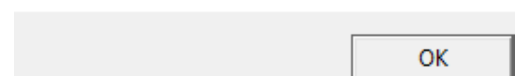
1. Attach the SD card to a Windows PC.
2. Run card_restorer.exe from the SD Card.
3. You will see a message box asking if you wish to re-partition and erase the SD card. Click on "Yes."
4. The next message box will tell you that the process will take a few moments. Click on "OK."
5. Next, you will see a command window open and see some text scrolling by.
6. Finally, you will see a message box saying "Reformatting is now complete!"

The camera firmware updater removable drive [F] will now be re-partitioned and all data on it will be erased!

Are you ABSOLUTELY sure you want to do this?



This make take a few moments. Please click OK and wait for another popup indicating completion.



```
C:\Windows\System32\cmd.exe
Insert new disk for drive F:
and press ENTER when ready... The type of the file system is RAW.
The new file system is FAT32.
QuickFormatting 7579M
Initializing the File Allocation Table (FAT)...
Format complete.
  7.4 GB total disk space.
  7.4 GB are available.

  4,096 bytes in each allocation unit.
  1,936,382 allocation units available on disk.

  32 bits in each FAT entry.

Volume Serial Number is F6BC-64AC
```